

# SEA LED FY5

## DESCRIPTION:

SEA LED® is Cantalupi Lighting LED underwater lights series. SEA LED® FY5 boat LED light is a very low profile built in stainless steel AISI 316L, flush mount, specifically designed for every kind of hull. Passivation treatment for the front trim ring mounted below the water line. All these submersible marine lights are serviceable from the yacht for a quick and easy inspection of the light body. SEA LED® FY5 underwater light is very powerful and creates a beautiful halo effect around the boat. High efficiency light is the result of the design of the reflector and the guaranteed quality of each LED.

STAINLESS STEEL ORDER CODE: 90SEALEFY5SS  
ALUMINUM ORDER CODE: 90SEALEFY5AAN

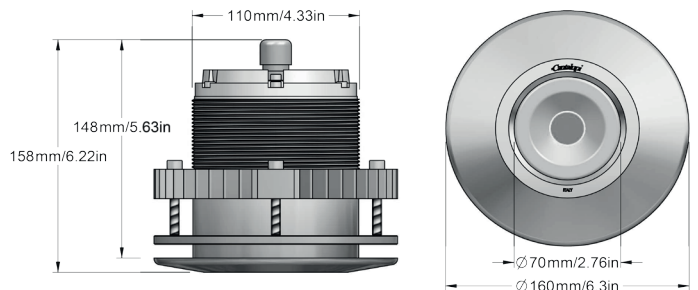
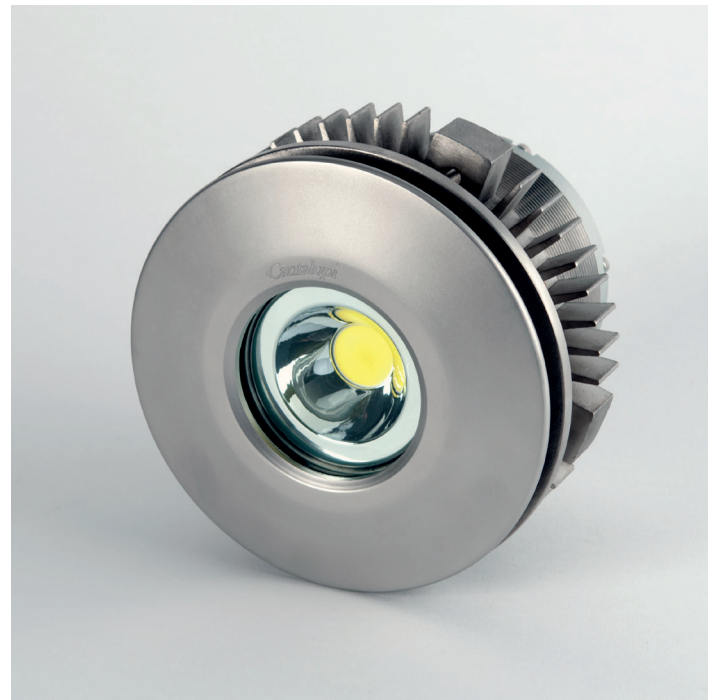
## LIGHT TECHNICAL DATA:

Power: 40 W  
Lumens: 4850  
Power Supply: 24 V DC  
Current / Amp draw: 1,7 A @ 24 V DC  
Color Temperature: 5.000 K  
Beam angle: 60°  
Optional Power Supply: 110 - 220 V AC  
Also available in Aluminum.

Note: data referred to the working lamp out of water.

## CHARACTERISTICS:

Width dimensions: Ø 160 mm / 6.3 in  
Height dimensions: 158 mm / 6.22 in  
Recessed hole: 110 mm / 4.33 in  
S.S. Weight: 6,65 Kg / 14.66 Lbs  
AL. Weight: 3,45 Kg / 7.60 Lbs  
Body material: AISI 316L S. Steel / Aluminum 6082  
Frame material: AISI 316L S. Steel / Aluminum 6082  
Heatsink: Aluminum 6082  
Protective glass: Tempered Clear Glass



## LIGHT POSITIONING:

In order to create the best lighting effect around the yacht, we will provide advice about quantity, depth of fixture and spacing between each SEA LED®. The effect in the water can vary from straight spears of light to a nice and relaxing halo around the hull simply positioning the lights at the desired distance one from the other. As a general rule we recommend placing the lights at a maximum distance of 4mt one from the other.

