

INTERIOR DOWNLIGHT

CEILING RECESSED • BACK PANEL MOUNTING

TOP 6 COMFORT

Frameless round lighting fixture with recessed lighting source for very low glare. Different optics allow precise control of beam spread and shape. Comfort downlights combine quality light with a sleek design.

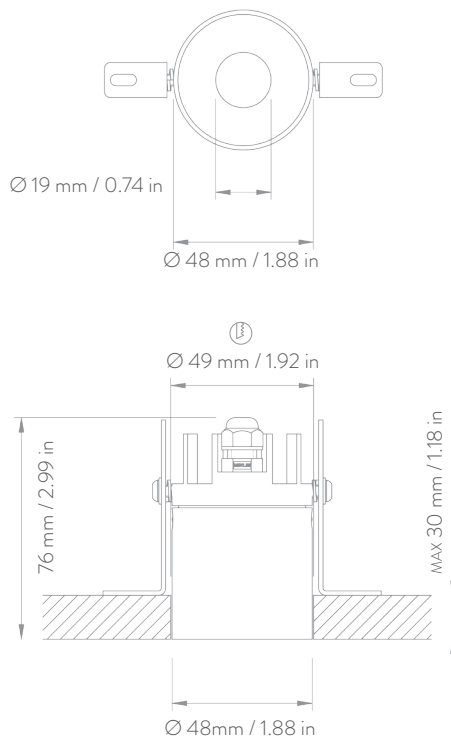
Materials: hard anodised aluminium body with PMMA lens.

Finishes: standard plus custom colours available in several palettes, including matte or gloss varnish.

Applications: suitable for general or accent lighting, depending on selected beam, when visual comfort is a design priority.



DRAWING



PHOTOMETRIC DIAGRAMS

LENS: NARROW
BEAM: 15°

Lumen: 345
Watt: 6
Lm/W: 58
CCT: 3000K
CRI: 92 TYP

Cone Diagram		
Lux	h/m	\varnothing/m
4009	1	0.26
1002	2	0.52
445	3	0.78

LENS: MEDIUM
BEAM: 25°

Lumen: 304
Watt: 6
Lm/W: 51
CCT: 3000K
CRI: 92 TYP

Cone Diagram		
Lux	h/m	\varnothing/m
1422	1	0.45
355	2	0.91
158	3	1.36

LENS: WIDE
BEAM: 29°

Lumen: 332
Watt: 6
Lm/W: 55
CCT: 3000K
CRI: 92 TYP

Cone Diagram		
Lux	h/m	\varnothing/m
1408	1	0.51
352	2	1.03
156	3	1.54

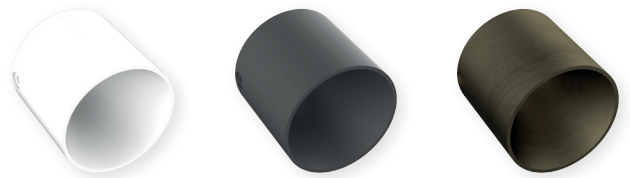
Note: photometric diagrams have been measured using lacquered matte black body finishes; in case of different finishes, please consider implications on lumen output and luminous distribution.

BODY FINISHES

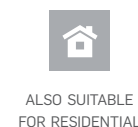
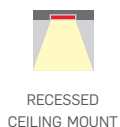
LACQUERED
RAL9010 GLOSS

LACQUERED
MATTE BLACK

ANTIQU
BRONZE



ITEMS	LENSES	COLOR TEMP.	POWER SUPPLY	BODY FINISHES
CODE	NARROW MEDIUM WIDE	2700K 3000K 4000K	CLL Vd: 24-32 DRIVER INCLUDED	LACQUERED RAL9010 GLOSS
			CSL Vf 11.3 If 500 mA DRIVER NOT INCLUDED	LACQUERED MATTE BLACK
				ANTIQU BRONZE
20COM6R	NB - MB - WB	2 - 3 - 4	D - N	LA - LB - AB



Note: Depending on the choice of finish, thickness of the product can vary up to 0,2 mm. Information provided with this document may be subject to change at any time without notice.