

## OTTO LIFTER S

Telescopic OTTO lamp with automatic movement through an electrical actuator. It can be switch on and off at the start of the telescopic control (up and down). Operated by: remote control, manual control, yacht automation. Enclosure incorporates a valve to drain humidity and avoid condensation.

### Dimensions:

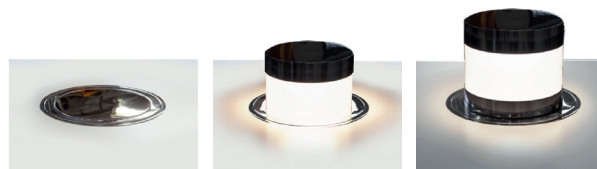
Ø 150 mm / 5.90 in (diameter)  
 128 mm / 5.03 in (height)  
 352 mm / 13.85 in (depth)  
 480 mm / 18.89 in (total height)

### Materials:

Body: AISI 316L Stainless Steel  
 Frame: AISI 316L Stainless Steel  
 Protective glass: Borosilicate glass

Note : Standard power cable: L = 2 mt

Note : Control box not included.

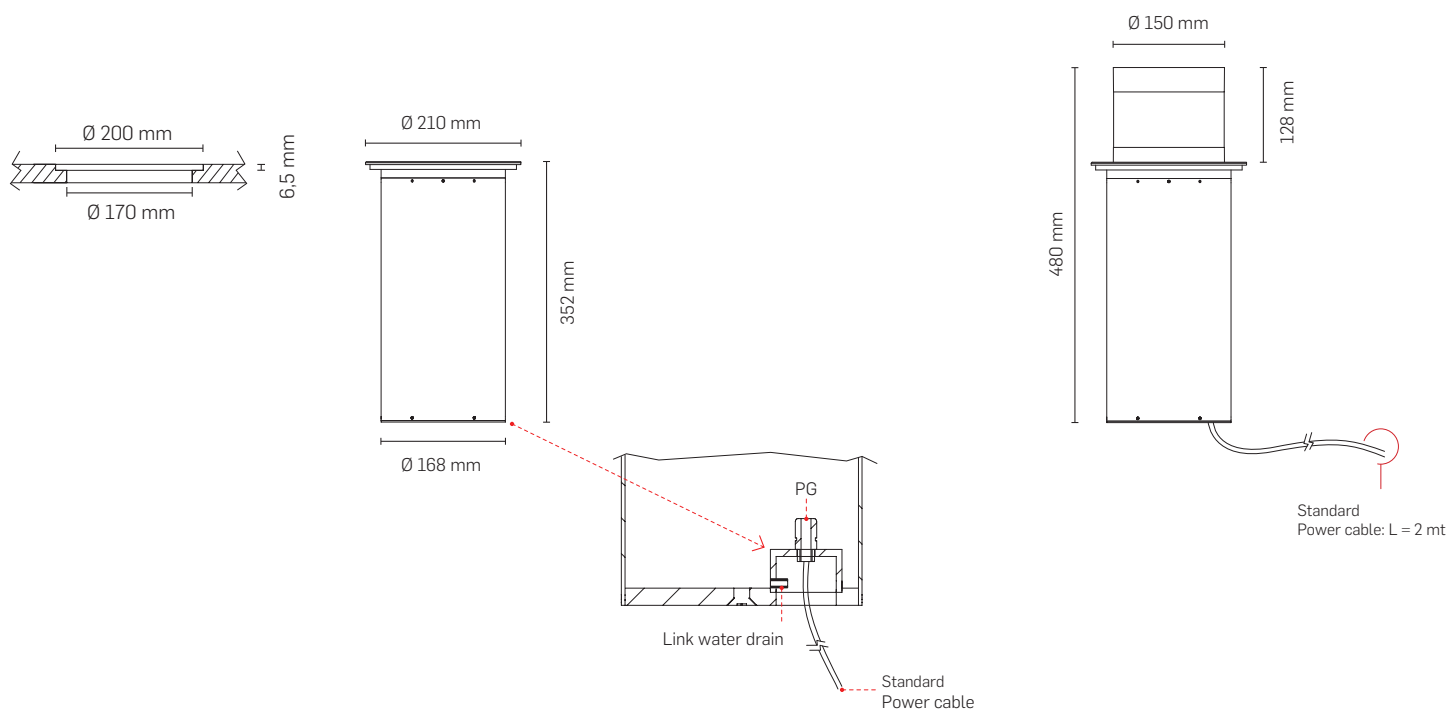


### DRAWING

INSTALLATION LOCATION

CLOSED PRODUCT

OPEN PRODUCT



ITEMS	LED POWER SUPPLY	COLOR TEMP.	BODY FINISHES	VERSION
CODE	CLL Vdc 24-32 DRIVER INCLUDED	2700K 3000K	STAINLESS STEEL	CODE
45OTTOLIFT01	D	2 - 3	SS	NEW



Note : Information provided with this document may be subject to change at any time without notice.