

CEILING - BULWARK - RECESSED



EXTERIOR DOWNLIGHT

HOUSING SPRING MOUNTING

STEEL 8S HSP - AG

Square lighting fixture with aluminium anti-glare ring and beam angle options for different light distributions. Protection glass is positioned between frame and anti-glare. With STEEL 8 Series elegant design meets high output and optimal efficiency, in a watertight assembly.

Materials:

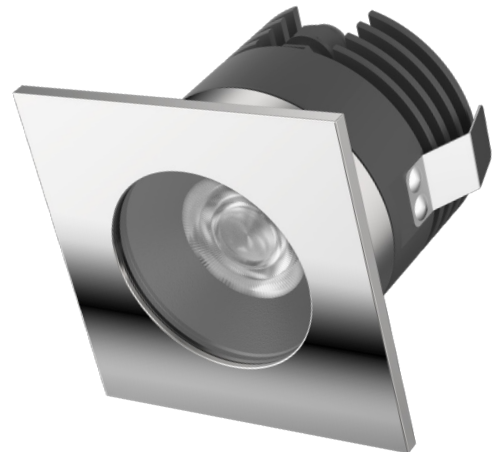
AISI 316L stainless steel body, hard anodised aluminium heat sink and anti-glare and PMMA lens.
Housing options are stainless steel, aluminium and plastic.

Finishes:

Frame comes in standard plus custom colours on request.

Applications:

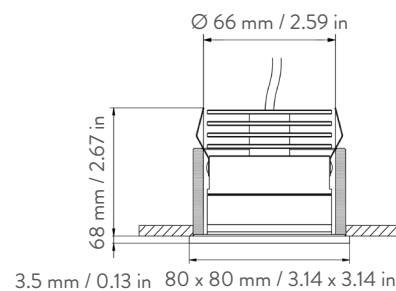
Suitable for general and uniform lighting of outdoor areas and side decks, these downlights cover all design needs when combined with smaller products and optimal beam angle selection.



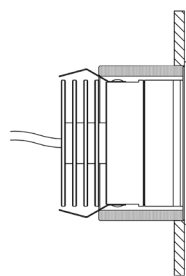
WITH ANTI-GLARE

DRAWING

CEILING MOUNT



BULWARK MOUNT



PHOTOMETRIC DIAGRAMS

LENS: MEDIUM
BEAM: 21°

Lumen: 754
Watt: 9
Lm/W: 83
CCT: 3000K
CRI: 92 TYP

Cone Diagram		
Lux	h/m	Ø/m
3646	1	0.37
912	2	0.74
405	3	1.11

LENS: WIDE
BEAM: 38°

Lumen: 779
Watt: 9
Lm/W: 86
CCT: 3000K
CRI: 92 TYP

Cone Diagram		
Lux	h/m	Ø/m
1647	1	0.69
412	2	1.38
183	3	2.07

LED TYPE: CREE®

Note : according to the choice of accessories (sanded glass), please consider the implications on the lumen output and the luminous distribution.

BODY FINISHES w/ANTI-GLARE

STAINLESS STEEL



LACQUERED RAL9010 GLOSS



ACCESSORIES

SANDED GLASS



HOUSINGS AVAILABLE ON REQUEST | CODE: 25STEEL8

STAINLESS STEEL



IGMOLINC (GLUED)
IGSAL (WELDED)

ALUMINIUM



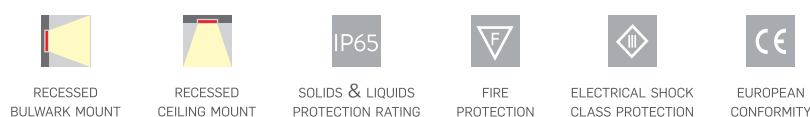
ALMOLINC (GLUED)
ALSAL (WELDED)

PLASTIC



APEPVMOLINC (GLUED)

ITEMS	LENSES	COLOUR TEMP.	POWER SUPPLY	BODY FINISHES	ACCESSORIES
CODE	MEDIUM WIDE	2700K 3000K 4000K	CLL Vdc 24-32 DRIVER INCLUDED CSL Vf16.5 If 350 mA DRIVER NOT INCLUDED	POLISHED STAINLESS STEEL LACQUERED RAL9010 GLOSS	SANDED GLASS
20SSHS8	MB - WB	2 - 3 - 4	D - N	SB - LB	SG



Information provided with this document may be subject to change at any time.

RELEASED ON 13.05.2019