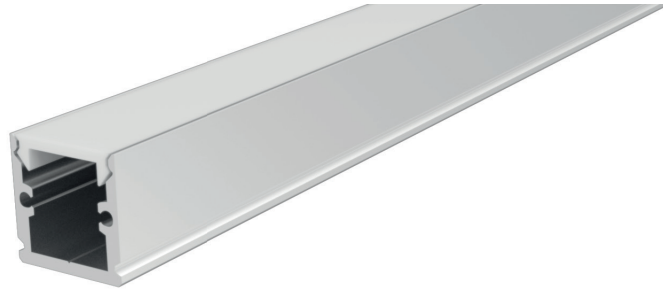


for Led Modules

# STE08



**TECHNICAL DATA**

PROFILE MATERIAL: ANODISED ALUMINUM  
 COVER MATERIAL: POLYCARBONATE, TRANSPARENT OR OPAL

VARIOUS POSSIBLE INSTALLATIONS

STANDARD LENGHT: 1m, 2m

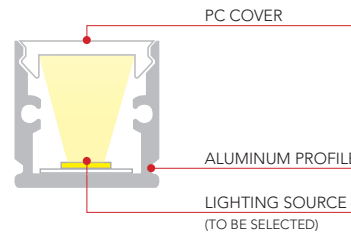
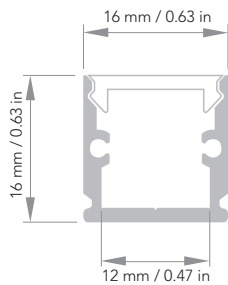
CUSTOM CUTS AND LENGHTS AVAILABLE ON REQUEST \*

\* AVAILABLE BY PRIOR ARRANGEMENT WITH THE SALES DEPARTMENT

**CODES**

PROFILE LENGHT 1m (STANDARD) **85STE08 1000AAN**  
 PROFILE LENGHT 2m (STANDARD) **85STE08 2000AAN**

**DRAWINGS**



**ACCESSORIES**

COVER:



PC COVER / TRANSPARENT

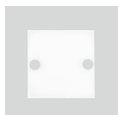
CODE:  
 LENGHT 1m **85STE08 1000 PC**  
 LENGHT 2m **85STE08 2000 PC**



PC COVER / OPAL

CODE:  
 LENGHT 1m **85STE08 1000 PCO**  
 LENGHT 2m **85STE08 2000 PCO**

END CAPS:



PLASTIC END CAP WITHOUT HOLE

CODE:  
**85STE08TF**



PLASTIC END CAP WITH HOLE

CODE:  
**85STE08TFF**

MOUNTING BRACKETS:



PC BRACKET

CODE:  
**85STESP**



STAINLESS STEEL AISI301 BRACKET

CODE:  
**85STESS**

