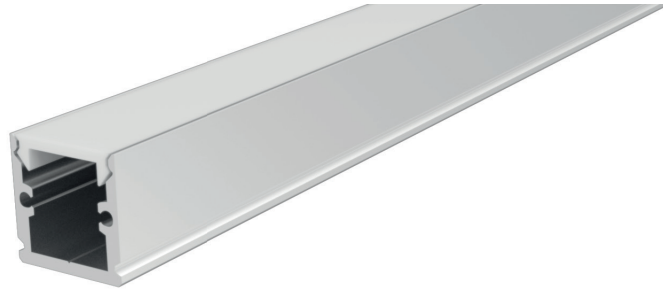


for Led Modules

STE10



TECHNICAL DATA

PROFILE MATERIAL: ANODISED ALUMINUM
 COVER MATERIAL: POLYCARBONATE, TRANSPARENT OR OPAL

VARIOUS POSSIBLE INSTALLATIONS

STANDARD LENGHT: 1m, 2m

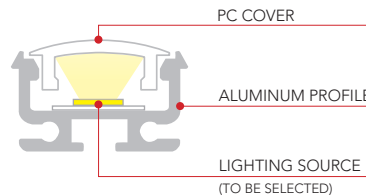
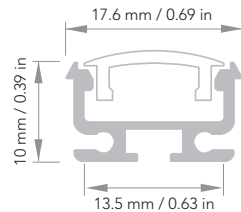
CUSTOM CUTS AND LENGHTS AVAILABLE ON REQUEST *

* AVAILABLE BY PRIOR ARRANGEMENT WITH THE SALES DEPARTMENT

CODES

PROFILE LENGHT 1m (STANDARD) **85STE10 1000AAN**
 PROFILE LENGHT 2m (STANDARD) **85STE10 2000AAN**

DRAWINGS



ACCESSORIES

COVER:



PC COVER / TRANSPARENT

CODE:
 LENGHT 1m **85STE10 1000 PC**
 LENGHT 2m **85STE10 2000 PC**



PC COVER / OPAL

CODE:
 LENGHT 1m **85STE10 1000 PCO**
 LENGHT 2m **85STE10 2000 PCO**

END CAPS:



PLASTIC END CAP WITHOUT HOLE

CODE:
85STE10TF



PLASTIC END CAP WITH HOLE

CODE:
85STE10TFF

MOUNTING BRACKETS:



PC BRACKET

CODE:
85STESP



STAINLESS STEEL AISI301 BRACKET

CODE:
85STESS



TEST REPORT



CE CERTIFIED