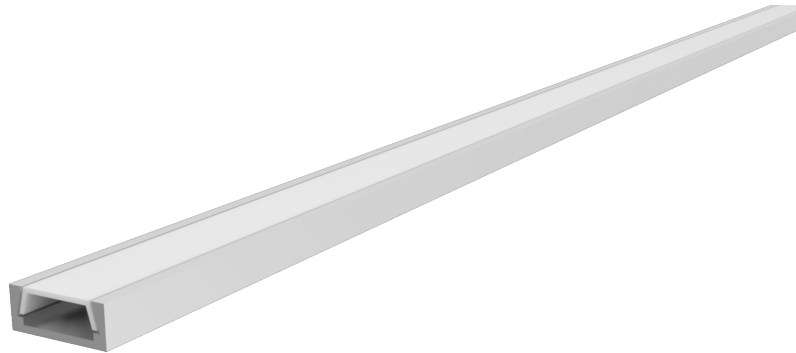


for Led Modules

MICA



TECHNICAL DATA

PROFILE MATERIAL: ANODISED ALUMINUM
 COVER MATERIAL: POLYCARBONATE, TRANSPARENT OR OPAL

VARIOUS POSSIBLE INSTALLATIONS

STANDARD LENGHT: 1m, 2m

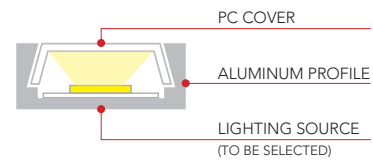
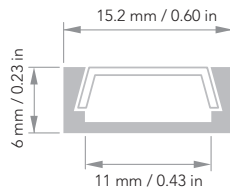
CUSTOM CUTS AND LENGHTS AVAILABLE ON REQUEST *

* AVAILABLE BY PRIOR ARRANGEMENT WITH THE SALES DEPARTMENT

CODES

PROFILE LENGHT 1m (STANDARD) **85MICA 1000AAN**
 PROFILE LENGHT 2m (STANDARD) **85MICA 2000AAN**

DRAWINGS



ACCESSORIES

COVER:



PC COVER / TRANSPARENT

CODE:
 LENGHT 1m **85PDSA 1000 PC**
 LENGHT 2m **85PDSA 2000 PC**



PC COVER / OPAL

CODE:
 LENGHT 1m **85PDSA 1000 PCO**
 LENGHT 2m **85PDSA 2000 PCO**

END CAPS:



PLASTIC END CAP WITHOUT HOLE

CODE:
85MICATF



PLASTIC END CAP WITH HOLE

CODE:
85MICATFF

MOUNTING BRACKETS:



STEEL CHROME

CODE:
85PDSACH



STAINLESS STEEL

CODE:
85PDSAZIN

